

**E U R U S**





## Smooth and Relax

### Chair

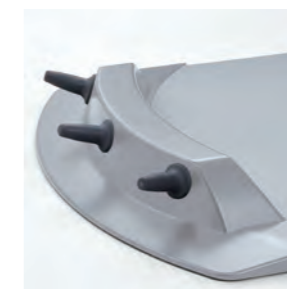
The hydraulic mechanism ensures smooth and quiet movement of the joints and provides a comfortable feeling for patients. The new twin-axis headrest system, capable of making a wide range of adjustments, can be fine-tuned in increments of 7.5 degrees, accommodating patients from children to adults. The height of the headrest can be adjusted with ease, requiring only half the force needed in previous models, more comfortable for dentist/dental assistant when adjusting the chair to the patient's comfort (patent pending).

Contour: Low starting height; 200 kg load capacity for the basic style model  
 Folding Legrest: Easy mounting and dismounting for children, elderly patients, and patients using a wheelchair; easy for dentist/dental assistant to examine the patient's dentition from the 6 o'clock position; and suited for orthodontic therapy.



#### Rotating armrest

The armrests are designed with a length and shape that makes it easy for patients to hold and the side-rotating mechanism helps elderly patients mount and dismount the chair with ease.



#### Chair stick switch

The dental chair can be entirely manipulated in a hands-free, hygienic and intuitive manner using only the operator's foot (patent pending).



#### Power headrest **Option**

The full 120 mm stroke and the neck angle can be easily adjusted without imposing excessive stress on the patient. The motorized headrest can be manipulated with the foot switches, allowing hygienic hands-free operation. Since the stick switches at the operator's feet allow hands-free adjustment of the headrest's angle and height, allowing the entire operation to be very hygienic.

## Low to High

### Arm holder

The table's vertical range of motion is 525-1,505 mm for the contour type and 715-1,275 mm for the pedestal type. The table is held by a flexible arm, which can be moved with a force 50% lighter than the previous models.



### Handle suited for touch-panel operation

The handle is designed not only for an easy grab-and-move motion, but also for providing a resting position for the hand to reduce stress and ensure reliable touch-panel operation.



### Holder's position

The holder, designed to be independent from the table, can be freely adjusted with a three-axis adjustment mechanism for the position best suited for each dentist.



\*The installation image for left-handed specification.