



TOWARDS ATRAUMATIC DIAGNOSIS AND TREATMENTS

AUTUMN OFFERS

valid from September 16th to December 31st, 2019

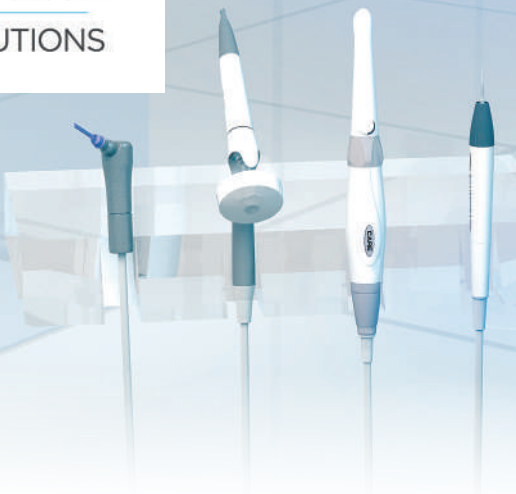
Scandinavia | Benelux | Prices excl. VAT

ACTEON

MINIMALLY
INVASIVE
SOLUTIONS



ACTEON
MINIMALLY
INVASIVE
SOLUTIONS



Special offers valid from September 16th to December 31st, 2019. These promotions are only valid through participant dealers. Price excl. VAT. Application area: Scandinavia and Benelux. Non contractual document. Copyright © 2019 ACTEON® - All rights reserved. No information or part of this document may be reproduced or transmitted in any form without the prior permission of ACTEON®. The information in this document may be modified by ACTEON® without notice. Date of creation: 07/2019.



Extraoral radiology

Article Dr. Fabio Gorni.....	4
X-Mind® trium.....	6
X-Mind® prime 2D.....	8
X-Mind® prime 3D.....	10

Bone Surgery

Article Dr. Federico Berton.....	12
Piezotome® Cube.....	14
Tip kits.....	16
ImplantCenter 2.....	17

Intraoral radiology

PSPIX®2.....	18
Imaging plate.....	20
X-Mind® unity + Sopix®.....	22
X-Mind® unity.....	23

Intraoral cameras

SOPROCARE®.....	24
SOPRO® 717.....	24

Ultrasonics

Newtron® P5 XS B.LED.....	14
Tips.....	27
Tip kits.....	30

Manual Instruments

Mouth mirrors.....	32
Photographic mirrors.....	34
Alginates mixer.....	36

Contacts.....	39
---------------	----



Dr. FABIO GORNI

Graduated in Dentistry and Dental Prosthesis from the Università di Milano in 1984. Former Visiting Lecturer in Endodontics at the Università degli Studi di Milano Ospedale San Paolo. He is an active member of the Italian Society of Endodontics (SIE) and the Italian Academy of Microscopic Dentistry. Specialist Member of the European Society of Endodontology and member of the American Association of Endodontists. Current Past President of the SIE. Visiting Lecturer and Perioral Aesthetics course convener at the Faculty of Dentistry and Dental Prosthesis of the Università Vita Salute San Raffaele. Co-Founder of Style Italiano.

Use of 3D technology in the diagnosis and treatment of endodontic disease

In recent years, the technology associated with endodontic therapy has undergone a veritable revolution. For years, intraoral X-rays were used as the basis for diagnosis and for planning root canal treatments, despite the fact that these images did not provide a faithful reproduction of the endodontic anatomy. This created a series of technical problems which, although they could be partly overcome by the operator's personal experience, to some extent also remained unresolved, especially in the field of diagnosis.

I personally started using Cone Beam for endodontic purposes more than 10 years ago. Although the machines that I used then were far from ideal for this specific purpose, the possibilities offered today by increasingly sophisticated technologies have greatly improved my diagnostic and interventional capabilities. In order to make an accurate diagnosis, an endodontist needs to perform a highly detailed assessment of the canal and pulp anatomy, which requires high-definition examination techniques and software that enables the endodontist to rotate the tooth accurately and easily. This may seem obvious and trivial, but is not.

Indeed, over the past 10 years, I have had the chance to work with a large number of devices and dozens of software programmes, but only very few have proven to be suitable for endodontic purposes. For a few years now, I have been using ACTEON's TRIUM technology, with extremely satisfactory results. The imaging is very accurate and highly detailed and, above all, the user-friendliness of the ACTEON IMAGING SUITE makes it possible to identify even slight differences between the different radiological slices, differences that are of paramount importance for making a correct endodontic diagnosis and also for the therapeutic decision-making process itself. Clinician experience alone is not sufficient for establishing the correct approach to be adopted in the case of disease of endodontic disease and very often clinical cases that were initially scheduled for orthograde treatment, following cone beam computed tomography (CBCT) assessment, turn into cases for endodontic surgery

or vice versa. We can therefore state that the capability we have now of performing these studies in a quick and easy manner has drastically reduced the number of incorrect diagnoses and, consequently, the number of clinical errors.

One of the most complex conditions to treat is undeniably external invasive root resorption, where the extent of the defect affects the treatment options. It therefore becomes sensible to perform a preoperative evaluation of the location and extent of the resorption and the potential for recovery thus depends on a correct 3-D planning of the procedure, which can only be achieved following examination of the cone beam images. It is very important to be able to view the slices of the tooth correctly in all three planes, focusing in particular on the axial slices, which will prove to be strategic from an endodontic diagnosis point of view.

Comparing these two teeth demonstrates just how important it is to analyse all the slices of the CBCT study correctly. We can see that, in the upper molar, the lesion penetrates into the pulp chamber, starting from the root's distal surface, but remains within the coronal third of the tooth, without significantly affecting the integrity of the pulp-chamber floor.

FIG. 10-11-12-13-14-15



Fig. 10



Fig. 11

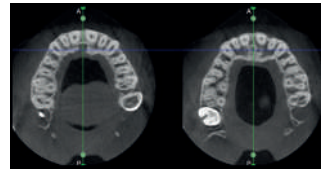


Fig. 12-13

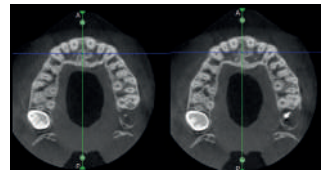


Fig. 14-15

The clinical images illustrate the operative treatment phases, from resorption debridement through to repair using bioceramic cement. FIG 16-17-18-19

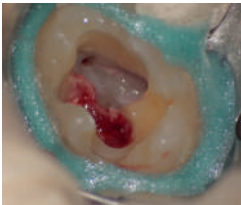


Fig. 16

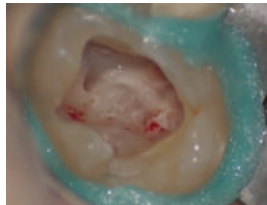


Fig. 17

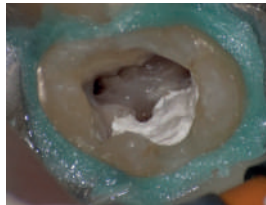


Fig. 18

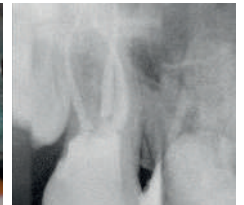


Fig. 19

The final radiology images confirm the validity of the conservative and endodontic treatment of the tooth.

IT'S TIME FOR
TRUE LOW
DOSE CBCT

X MIND
trium



3 in 1

System covering Pan, 3D and Ceph exams

3D

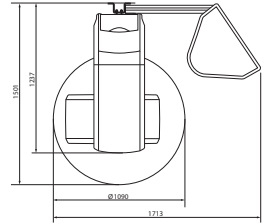
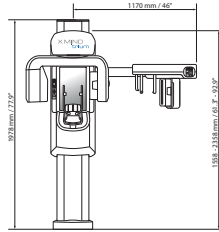
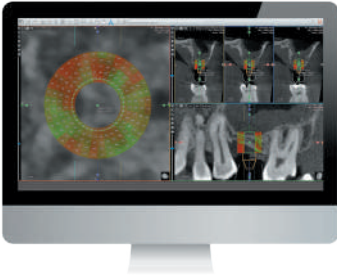
Mapping of bone density to improve success rate

Up to 50%

Dose reduction*

75 μ m

High-resolution image for reliable diagnosis



A broad selection of FOV

X-Mind® trium offers you a broad selection of field of view, letting you focus on the region of interest for the target diagnosis and reducing the patient's exposure to X-rays:



ø 40x40 mm



ø 60x60 mm



▶ trium : ø 80x80 mm
▶ trium True Low Dose : ø 80x90 mm



▶ trium : ø 110x80 mm
▶ trium True Low Dose : ø 110x90 mm



AIS



Mac



WINDOWS COMPATIBLE



TWAIN

	Workstation PC with standard monitor included		
	PAN CEPH	PAN 3D	PAN CEPH 3D
X MIND trium	42-628 € 34 900 €	76-074 € 46 990 €	87-660 € 68 500 €
		78-900 € 50 900 €	89-000 € 72 100 €
TRUE LOW DOSE			

*Ratio based on DAP measurements from standard X-Mind® Trium settings 90kV-8mA-300prjs

Class IIb Medical devices IIb (IMQ - CE 0051). Manufacturer: de Götzen ACTEON group (Italy).

X-MIND® trium is a class 3R laser product per IEC 60825-1:2007. Avoid direct eye exposure to laser radiation. Viewing the laser output with magnifying optical instruments (for example, surgical microscope and binocular glasses) may pose an eye hazard and thus the user should not direct the beam into an area where such instruments are likely to be used.

IT'S TIME FOR
EFFICIENT PANORAMIC
X-RAYS

X MIND
prime



Easy 2D
diagnosis

Easy
positioning

Easy user
interface

Easy
installation

Easy
training

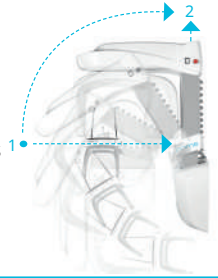


UNMATCHED SPEED OF INSTALLATION

X-Mind® prime is ready to install! Delivered completely assembled at your practice, you are all set-up in only one hour.

As simple as one box, one technician, two steps and that's it!

It does not interrupt the daily work and operations of the office, helping you to save time.



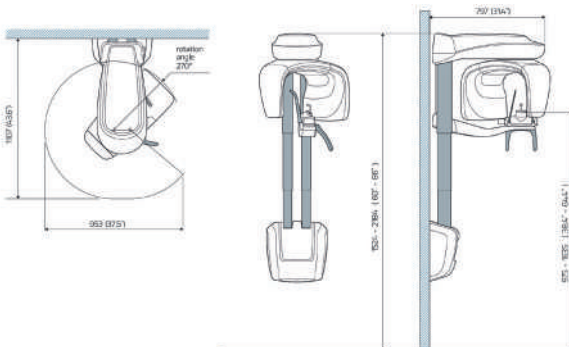
X-MIND® PRIME PAN 2D: Panoramic solution only

- ▶ Accurate panoramic examinations
- ▶ Improved communication with your patients
- ▶ Minimum time for examinations preparation
- ▶ Sharp image at first view

23.975 €

16 500 €

Ref. W1200001V:
XMP 2D WALL 220-240V



IT'S TIME FOR
EFFICIENT 3D
DIAGNOSIS

X MIND
prime



56

2D and 3D exams to cover all your clinical applications

1

minute to edit your implant report with the intuitive AIS software

1 to 1

Face-to-face patient positioning

0

Footprint space with the innovative wall mounted system

100%

Mac® and Windows® compatible with AIS software

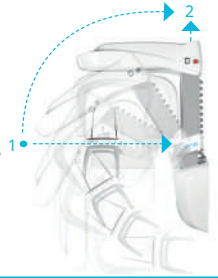


UNMATCHED SPEED OF INSTALLATION

X-Mind® prime is ready to install! Delivered completely assembled at your practice, you are all set-up in only one hour.

As simple as one box, one technician, two steps and that's it!

It does not interrupt the daily work and operations of the office, helping you to save time.



X-MIND® PRIME PAN 3D:

CBCT solution providing both panoramic and 3D exams


- ▶ Choose your 2D and 3D examination from a wide range of clinical applications
- ▶ Plan your treatment
- ▶ Efficiently communicate with your patient

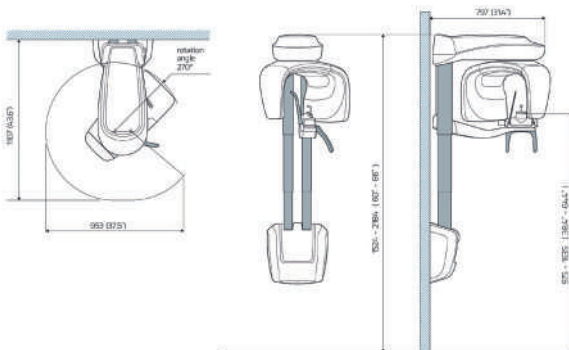
68 340 €

44 500 €

Ref. W120005V:

XMP 3D WALL 220-240V

 Workstation PC with standard monitor included.



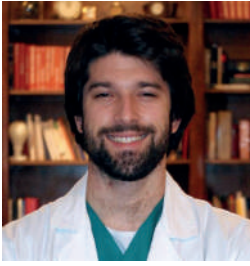
AIS



Mac



COMPATIBLE WINDOWS



Dr. FEDERICO BERTONI

Graduated in Dentistry and Dental Prostheses with maximum marks cum laude from the University of Trieste, where he then specialised in Oral Surgery, obtaining marks of 50/50 cum laude.

Current consultant at the Trieste University Maxillofacial Surgery and Dentistry Clinic; surgical consultant at family dental offices.

Lecturer in the Oral Surgery specialisation at the University of Trieste; National Advisor to the Board of the Italian Multi-specialty Society of Young Surgeons, member of the International Piezoelectric Surgery Academy and SIOCMF.

Researcher in regenerative surgery, implantology and periodontology, he has published over twenty scientific articles in international journals and frequently speaks at courses and congresses.

SURGICAL EXTRACTIONS: THE STATE OF THE ART

Surgical extraction of impacted third molars is one of the most common procedures performed by oral surgeons. While it remains an invasive procedure, the oral surgeon now has technologies such as piezosurgery, in addition to clinical and surgical patient-oriented protocols to perform the intervention safely and with the least possible discomfort for the patient.

CLINICAL CASE STUDY

48 partially impacted and in horizontal position according to Winter, class 1A according to Pell&Gregory, class II (score of 7) according to the modified JD classification, therefore indicating an intervention of medium complexity. [Figures 1-2]

The access flap was set up by intrasulcular approach with preservation of the papilla between 46 and 47. The full-thickness flap was carefully detached, displaying the crown of 48.

[Figures 3-4]



Fig. 1

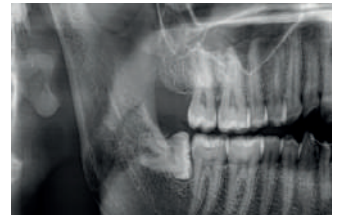


Fig. 2



Fig. 3



Fig. 4

Pericoronal distal and vestibular osteotomy was performed with a piezoelectric device (Piezotome Cube) using an osteoplastic insert (CE1) [Figures 5-6].



Fig. 5



Fig. 6

The initial syndesmotomy of the element was then conducted using extraction kit inserts (LC1 and LC2) [Fig. 7].



Fig. 7



Fig. 8

Coronectomy was performed with a multi-blade tungsten carbide cutter and completed by fracture using a lever [Fig. 8].

The next step of the operation was to separate the root cones with conventional bur completed with the piezosurgical Ninja insert (extraction kit, Piezotome Cube) [Fig. 9].



Fig. 9



Fig. 10

The further use of extraction inserts (LC1 and LC2) thus enabled the avulsion of the three root cones with a curved apex [Figures. 10-11].

Alveolar osteoplasty (also using a piezosurgical device) was followed by the placement of a Platelet Rich Fibrin (PRF) clot and the primary intention suture of the surgical access using 4/0 silk [Figures 12-13].



Fig. 11



Fig. 12

After 14 days, the surgical wound appeared to be fully sealed [Fig. 14].

The use of the Piezotome Cube together with compliance with advanced surgical protocols assisted in the completion of the operation to the satisfaction of the patient and the surgeon. The main advantages of piezosurgery were the preservation of soft tissues, optimal visibility of the operating field, reduced blood loss, less vibration and noise, greater comfort for the patient and protection of the jaw and dental structures.



Fig. 13



Fig. 14

Bibliography

1. Winter GB (ed). Impacted mandibular third molars. St. Louis: American Medical Book, 1926.
2. Pell GJ, Gregory BT. Impacted mandibular third molars: classification and modified techniques for removal. Dent Digest 1933;39:330-338.
3. Stacchi C, Daugela P, Berton F, Lombardi T, Andriulionis T et al. A classification for assessing surgical difficulty in the extraction of mandibular impacted third molars: description and clinical validation. Quintessence Int. 2018;49(9):745-753.
4. Bhati B, Kukreja P, Kumar S, Rathil VC, Singh K, et al. Piezosurgery versus rotary Osteotomy in mandibular impacted third molar extraction. Ann Maxillofac Surg. 2017 Jan-Jun; 7(1):5-10
5. Canellas JVDS, Ritto FG, Medeiros PJD. Evaluation of postoperative complications after third molar surgery with the use of platlet-rich-fibrin: systematic review and meta-analysis. Int J Oral Maxillofac Surg. 2017 Sep;46(9):1138-1146

PIEZOTOME CUBE

IT'S TIME FOR ATRAUMATIC EXTRACTIONS



7-626€
5 890 €

1 ESSENTIAL KIT
included



Ref. F50100

Delivered with a multifunction footswitch, a Piezotome® CUBE LED handpiece, 1 handpiece holder, an Essential II kit (6 tips), a Piezotome® dynamometric wrench, 1 Irrigation pole, 2 autoclavable irrigation lines, 5 clips and 15 perforators.

1 EXTRACTION KIT
included

with a value of 929 €

Extraction

Syndesmotomy

- ▶ For maximum bone preservation
LC1, LC2 (x2), LC2L, LC2R, Ninja® tips
- ▶ No flap & no alveolectomy
- ▶ Bone table respected for immediate implantation



Ref. F87546

SURGICAL EXTRACTION PROTOCOL

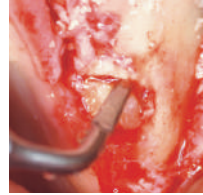
LC1

Ultrasonic periosteal intended for syndesmotomy and periradicular osteotomy.

Length of active part: 9mm.

This tip can be inserted deeply and with great care along the periodontal ligament, between the root and the alveolar bone.

Ref. F87507



LC2

The particularly slim LC2 allows access to tight spaces between the roots and the alveolar bone without risk of damaging adjacent teeth or cortical bone.

Length of active part: 10mm.

Ref. F87542

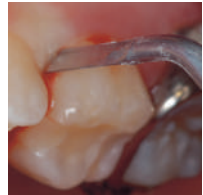


LC2L

Oriented at 45° to the left, the LC2L facilitates access to the posterior areas. The tip's slimness respects the morphology of cortical bone and offers working comfort and efficiency in areas with reduced visibility.

Length of active part: 10mm.

Ref. F87543



LC2R

Oriented at 45° to the right, the LC2R facilitates access to the posterior areas. The tip's slimness respects the morphology of cortical bone and offers working comfort and efficiency in areas with reduced visibility.

Length of active part: 10mm.

Ref. F87544



NINJA

This saw tip with double cutting surfaces is endowed with a laser marker every 3mm, to evaluate depth or cutting thickness. It is particularly efficient for hemisections and root amputations. It is also indicated for sectioning of impacted molars during extraction.

Length of active part: 9mm.

Ref. F87545



BONE SURGERY

Upon purchase of a Piezotome® Cube

2 kits for the price of 1*!



~~929 €~~
890 €

Extraction kit

Ref. F87546
Tips LC1, LC2 (x2),
LC2L, LC2R, Ninja®.



~~1-201 €~~
890 €

Intralift™ kit

Ref. F87536
Tips TKW1, TKW2,
TKW3, TKW4,
TKW5 (Ø 3 mm).



~~1-224 €~~
890 €

Bone Surgery kit

Ref. F87509
Tips BS1S, BS2L,
BS2R, BS4, BS5, BS6.



~~947 €~~
890 €

Sinus Lift kit

Ref. F87519
Tips SL1, SL2,
SL3, SL4, SL5.



~~792 €~~
781 €

Crest Splitting kit

Ref. F87567
Tips CS1, CS2, CS3,
CS4, CS5, CS6.



~~616 €~~
600 €

Crown Extension kit

Ref. F87554
Tips BS6, CE1,
CE2, CE3.



~~686 €~~
676 €

Piezocision™ kit

Ref. F87576
Tips PZ1, PZ2L,
PZ2R, PZ3.



~~1-224 €~~
890 €

Essential kit

Ref. F87528
Tips BS1S,
BS4, SL1, SL2,
SL3, LC2.

MORE
POSSIBILITIES



BS1L «Long»

Depth of cut 15 mm
with autoclavable
universal wrench
Ref. F87527

223 €



BS1RD

Rounded saw,
280° of active
surface
Ref. F87557

239 €

*Offer on identical kits.
Class IIa Medical devices (GMED) - CE0459.
Manufacturer: Satelec® (France)

IMPLANTCENTER 2

**The alliance of technologies
for powerful and secure
bone surgeries**

16 128 €

9 590 €

3 modes:

- ▶ Piezotome® (bone surgery)
- ▶ Newtron® (conventional treatments: perio, endo,...)
- ▶ I-Surge™ (implant motor).



Ref. F27200

Delivered with a LED motor, a LED motor cord, a progressive footswitch, 2 brackets, 2 handpiece holders, 2 sterilizable irrigation lines and 30 perforators.

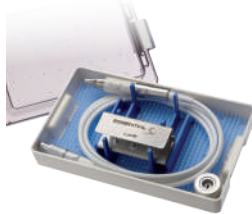
Essential Pack (Ref. F87529: Sterilization box, Piezotome II LED handpiece with cord, Essential II kit with BS1S II, BS4 II, LC2 II, SL1 II, SL2 II, SL3 II tips and a Piezotome dynamometric wrench).

Class IIa Medical devices (GMED) – CE0459.

Manufacturer: Satelec® (France)

1 ESSENTIAL PACK included

with a value of 2 593 €



1 EXTRACTION KIT included

with a value of 929 €

Extraction

Syndesmotomy

- ▶ For maximum bone preservation
LC1, LC2 (x2), LC2L, LC2R, Ninja® tips
- ▶ No flap & no alveolectomy
- ▶ Bone table respected for immediate implantation



Ref. F87546

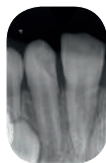
INTRAORAL RADIOLOGY

2FIBER[®]
PIXEL

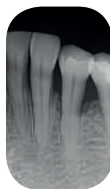
Differentiation of the dental tissue

FIBER2PIXEL[®] technology is based on the use of broad spectrum optical microfibres for the guided transmission of photon emissions in order to provide highly contrasted images.

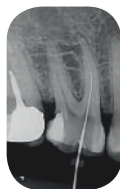
Paedodontics
size 0



Periodontics
size 1



Endodontics
size 1



Orthodontics
size 1



Cariology
size 2

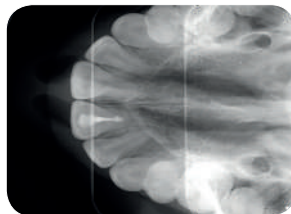


Implantology
size 2

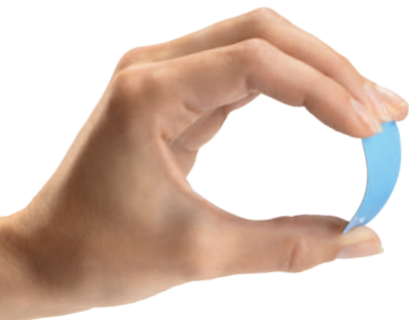
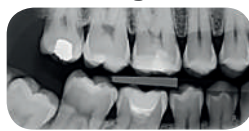


- ▶ With FIBER2PIXEL[®] technology, PSPIX^{®2} provides accurate images and striking contrast to ensure a reliable diagnosis.
- ▶ Various sizes are available depending on patient morphology and clinical applications.

Occlusal size 4



Bitewing size 3



PSPiX²

The first personal imaging plate scanner

7-247-€
5 690 €



- ▶ Compact design and easy to access: the smallest imaging plate scanner on the market for your personal convenience.
- ▶ Images in seconds: you no longer need to move to another room to scan your images.
- ▶ Featuring an exclusive “Click & Scan” concept, the new PSPiX² is totally intuitive: make your selection on the large touchscreen, drop in your imaging plate and let the PSPiX² do the rest...



Ref. S_702_0013

Delivered with 4 ERLM (2x size 1, 2x size 2), 200 protective bags (100x size 1, 100x size 2), an imaging plate storage box, 1 stylus for touchscreen, 1 protection bag for PSPiX² system, 1 power supply 100-240 VAC, 1 Ethernet cable, ACTEON[®] Imaging Suite (AIS) software.



Standard imaging plate

Compatible with Dürer Vistascan and **PSPIX®²**

108 €

87 €



	PSPIX² Box of 2
Size 0 (22 x 35mm)	Ref. 990215
Size 1 (24 x 40mm)	Ref. 990216
Size 2 (31 x 41mm)	Ref. 990217
Size 3 (27 x 54mm)	Ref. 990218

IDOT™ imaging Plate

Numbered plate for better identification

325 €

259 €



	PSPIX Box of 6	Compatible with	
Size 0 (22 x 35mm)	Ref. S_700182	PSPIX®	✓
Size 1 (24 x 40mm)	Ref. S_700183	SOREDEX®*	✓
Size 2 (31 x 41mm)	Ref. S_700184	Digora	
Size 3 (27 x 54mm)	Ref. S_700185	INSTRUMENTARIUM®*	✓
		Express	
		KAVO®*	✓

Bag & Cover for imaging plate

For **PSPIX®²** and **PSPIX®** (previous generation)



PSPIX 1st generation





PSPIX²

- ▶ Protection against scratches, light and cross contamination
- ▶ Ergonomic and easy to use

Compatible with

PSPIX®	✓
SOREDEX® Digora	✓
INSTRUMENTARIUM® Express	✓
KAVO®*	✓

	PSPIX ² <i>Box of 300</i> 	PSPIX <i>Box of 250</i> 
Size 0	Ref. 700546	Ref. 700338L
Size 1	Ref. 700547	Ref. 700339L
Size 2	Ref. 700548	Ref. 700340L
Size 3	Ref. 700549	Ref. 700341L

83€
63 €

70€
56 €

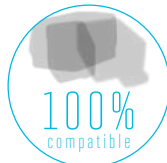


Protective bag for imaging plate

For **PSPIX²** and **PSPIX®** (previous generation)

Compatible with

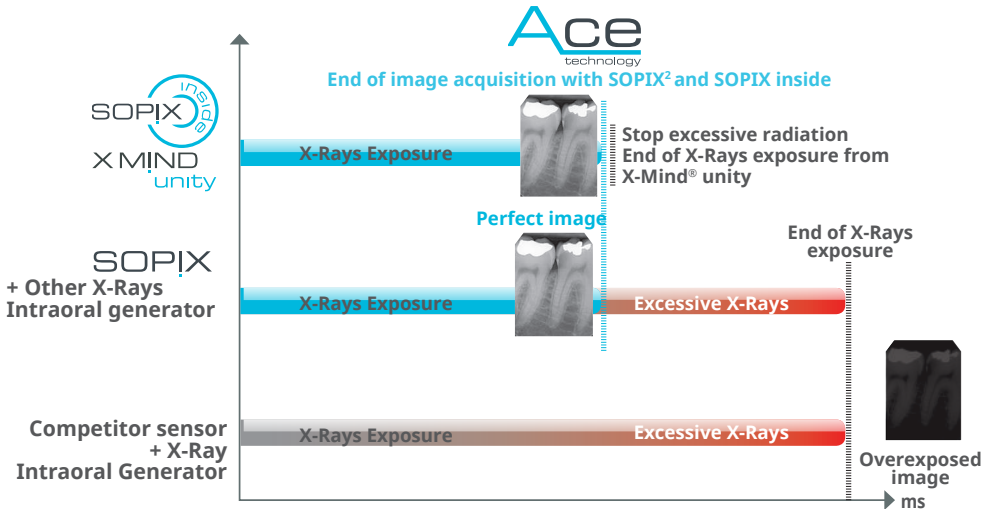
	PSPIX ²	PSPIX
PSPIX®	✓	✓
SOREDEX® Digora	✓	✓
INSTRUMENTARIUM® Express	✓	✓
DÜRR DENTAL®* Vistascan®*	✓	✓
KAVO®*	✓	✓



39€
32 €

PSPIX ² and PSPIX <i>Box of 250</i>	
Size 0	Ref. 700342L
Size 1	Ref. 700343L
Size 2	Ref. 700344L
Size 3	Ref. 700345L

With the **Ace** technology, no risk of overexposing the image and the patient.



X MIND **unity** + SOPIX **INSIDE** = 9-908-€
6 990 €

SOPIX® inside
size 1 - Standard definition

Ref. S_802_6010

SOPIX® inside: Class IIa Medical devices (GMED) - CE0459.
 Manufacturer: Sopro® (France)





5 000 €
3 390 €

X MIND unity

A sharp and contrasted image

- ▶ Adjustable parameters such as kV, mA, and exposure time combined to 0.4 mm focal spot, X-Mind® unity provides unrivaled image definition for higher diagnostic reliability.



reddot design award
 winner 2013

Class IIb Medical devices (IMQ - CE 0051).
 Manufacturer: de Götzen (Italy)

Wall version:	Top mounting		Bottom mounting	
	Long cone	Square cone	Long cone	Square cone
0.40 m extensor	W0800003	W0800006	W0800012	W0800015
0.80 m extensor	W0800004	W0800007	W0800013	W0800016
1.10 m extensor	W0800005	W0800008	W0800014	W0800017



X-MIND® unity - Mobile

Mobile support: W0800127

Extra

500 €

Mobile version:			
Long cone	Short cone	Long square cone	Short square cone
W0800085	W0800091	W0800128	W0800129

Class IIb Medical devices (IMQ - CE 0051).
 Manufacturer: de Götzen (Italy)



SOPROCARE



reddot design award
winner 2013

3 needs, 3 modes

- ▶ **CARIO mode:** caries are detected as red, surrounding tissue is displayed in black and white.
- ▶ **PERIO mode:** highlight plaque, calculus, and gingival inflammation.
- ▶ **DAYLIGHT mode:** communicate more effectively with your patient and see details that are not visible with the naked eye.

3 921 €
3 390 €

with Mini dock USB2
Ref. S_717_1602



SOPROCARE® handpiece

Ref. S_950_0008
Delivered with 4 SOPROTIPS and a handpiece holder.

Class IIa Medical devices (GMED) - CE0459.
Manufacturer: Sopro® (France)



PERIO Mode



Cario Mode




Daylight Mode



SOPRO 717 FIRST

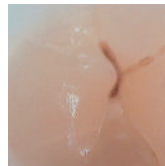
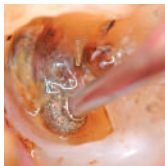
Reveals what was once invisible

- ▶ Large depth of field from extraoral to macrovision
- ▶ Exceptional image quality provided by a highly sophisticated optical system
- ▶ Extremely small camera head for easier access
- ▶ Touch-sensitive Sopro® Touch 

SOPRO® 717 First handpiece

Ref. S_717_0105
Delivered with a handpiece holder.

MACROVISION



Class IIa Medical devices (GMED) - CE0459.
Manufacturer: Sopro® (France)

3 306 €

2 590 €

with Mini dock USB2
Ref. S_717_1602



NEUTRON
P5XS B₀LED

Preserve teeth with perfect ultrasonic vibrations through steel tip quality



Ref. F62100
Delivered with a Newtron® Slim B.LED handpiece with blue ring, a white LED ring, a F.L.A.G. kit (5x 1.5ml), a power supply, 3 tips (N°1, N°1S, H3), an autoclavable flat wrench and a 300ml tank.
Class IIa Medical devices (GMED) - CE0459.
Manufacturer: Satelec® (France)

- ▶ The easy and precise flow adjustment provides more powerful cavitation and **maximum tip efficiency** (deposits fragmentation, disinfecting effect).
- ▶ **Any type of irrigation** solution can be used including water, sodium hypochlorite or chlorhexidine.

2-548-€
1 750 € Mirror Pure Reflect® N°4 or N°5 and 1 mirror handle XL Style INCLUDED

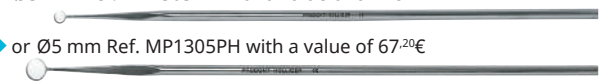
- 1 box of 12 mirrors with a value of 46,⁹⁰€
 - ▶ mirror Pure Reflect® N°4 - Ø 22mm: Ref. MP3622PH
 - ▶ or mirror Pure Reflect® N°5 - Ø 24mm: Ref. MP3624PH
- and 1 mirror handle stainless steel XL Style: Ref. 210.00XL with a value of 10,⁵⁰€



or

2-557-€
1 750 € 1 round micro mirror Pure Reflect® smooth stem INCLUDED

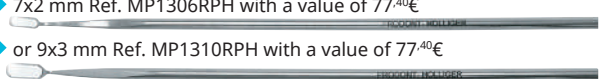
- ▶ Ø3 mm Ref. MP1303PH with a value of 67,²⁰€
- ▶ or Ø5 mm Ref. MP1305PH with a value of 67,²⁰€



or

2-567-€
1 750 € 1 rectangular micro mirror Pure Reflect® smooth stem INCLUDED

- ▶ 7x2 mm Ref. MP1306RPH with a value of 77,⁴⁰€
- ▶ or 9x3 mm Ref. MP1310RPH with a value of 77,⁴⁰€



Patented NEWTRON® technology:

Ergonomic

- ▶ The easy and precise flow adjustment provides more powerful cavitation and maximum tip efficiency

Painless treatment for the patient

- ▶ Controlled vibrations: More precise treatment and gentle on teeth
- ▶ Frequency adjustment: Maximal and continuous efficiency whatever the load applied

The widest range in the market, having nearly 80 different tips, with exclusive designs, alloys and coatings for clinical versatility.

- ▶ Steel tip quality: Anatomy and enamel preservation
- ▶ Total irrigation control: No heating = safer for tissues



Color Coding System



ACTEON® Dental Tips are color coded to show their recommended power range. The same color coding is displayed on the ultrasonic generators and Newtron® dynamometric wrenches.



Low power
Periodontics



Medium power
Endodontics



High power
Prophylaxis



Very high power
Restorative and Conservative



3 tips for the price of 2*

17 tips for the price of 10*

POWER
0 to 25%

periodontics



H1
F00366
137 €

H2L
F00367
137 €

H2R
F00368
137 €

H3
F00369
137 €

H4L
F00114
137 €

H4R
F00115
137 €

perioPrecision

perioSoft

POWER
0 to 25%



P2L
F00090
137 €

P2R
F00091
137 €

PH1
F00702
122 €*
*Set of 4 tips.

PH2L
F00705
122 €*
*Set of 4 tips.

PH2R
F00706
122 €*
*Set of 4 tips.

*perio***maintenance**
BDR

POWER
0 to 25%



TK1-1S
F01001
137 €

TK1-1L
F01004
137 €

TK2-1L
F02162
137 €

TK2-1R
F02161
137 €

POWER
0 to 25%

implantProtect
Pure Titanium



IP1
F02121
137 €

IP2L
F02122
137 €

IP2R
F02123
137 €

IP3L
F02124
137 €

IP3R
F02125
137 €

*Offer on identical tips, excluding tip n°1. This offer is not cumulative.
Class IIa Medical devices (GMED) - CE0459. Manufacturer: Satelec® (France)

NEWTRON TIPS

scaling

3 tips for the price of 2*

17 tips for the price of 10*

POWER
50 to 75%

N°1S
F00245
89 €



N°2
F00247
89 €



N°3
F00248
89 €



N°10P
F00253
89 €



N°10X
F00359
89 €



N°10Z
F00254
117 €



perfectmargin

Rounded

POWER
50 to 75%

POWER
25 to 50%

PM1
F02250
133 €



PM2
F02251
133 €



PM3
F02252
102 €



PM4
F02253
133 €



perfectmargin

Shoulder

POWER
50 to 75%

POWER
25 to 50%

PMS1
F02254
133 €



PMS2
F02255
133 €



PMS3
F02256
102 €



excavus

POWER
50 to 75%

EX1
F02040
136 €



EX2
F02041
136 €



EX3
F02042
136 €



EX-L
F02044
136 €



EX-R
F02043
136 €



*Offer on identical tips, excluding tip n°1. This offer is not cumulative.
Class IIa Medical devices (GMED) - CE0459. Manufacturer: Satelec® (France)

3 tips for the price of **2***

17 tips for the price of **10***

endodontics



IRRISAFE™
(Blister of 4)
104 €

POWER
25 to 50%

- IRR 20-21mm - F43807
- IRR 20-25mm - F43808
- IRR 25-21mm - F43805
- IRR 25-25mm - F43806



ET40
F88012
158 €



ET40D
F88014
167 €

endosuccess
Apical Surgery

POWER
25 to 50%



AS3D
F00065
137 €



AS6D
F00079
137 €



AS9D
F00067
137 €



ASLD
F00080
137 €



ASRD
F00081
137 €

endosuccess
Retreatment

POWER
25 to 50%

POWER
75 to
100%



ET18D
F88017
167 €



ETBD
F88020
167 €



ET20
F88011
158 €



ET25
F88018
167 €



ET25S
F88021
167 €



ET25L
F88022
167 €



ETPR
F88019
158 €

endosuccess
Canal Access Prep

POWER
25 to 50%



CAP1
F88181
111 €



CAP2
F88182
111 €



CAP3
F88183
111 €

POWER
50 to 75%

79 €

49 €

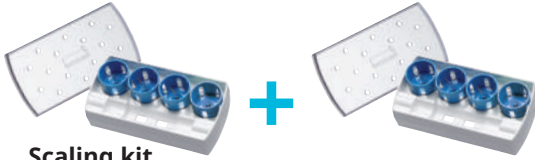
SPECIAL OFFER
N°1 TIP

N°1
F00246

*Offer on identical tips, excluding tip n°1. This offer is not cumulative.
Class IIa Medical devices (GMED) - CE0459. Manufacturer: Satelec® (France)

2 kits for the price of **1**

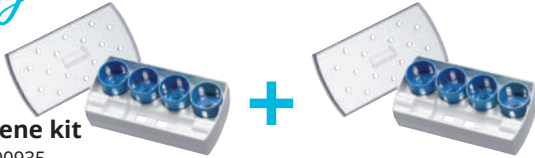
scaling



Scaling kit
 Ref. F00934
 Autoclavable plastic box, N°1, N°1S, N°10X, H3 tips, 4 NEWTRON® wrenches.

2 pcs. ~~1006 €~~
503 €
 = 251,50 € each

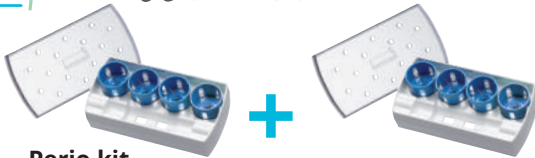
hygiene



Hygiene kit
 Ref. F00935
 Autoclavable plastic box, N°1, N°1S, 10Z, TK1-1S tips, 4 NEWTRON® wrenches.

2 pcs. ~~930 €~~
465 €
 = 232,50 € each

periodontics



Perio kit
 Ref. F00936
 Autoclavable plastic box, N°1S, H3, H4L and H4R tips, 4 NEWTRON® wrenches.

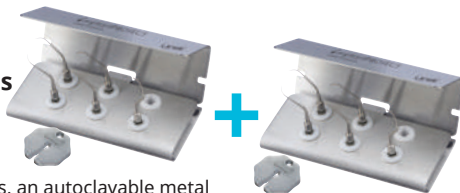
2 pcs. ~~1180 €~~
590 €
 = 295 € each

implantProtect

Pure Titanium

Exclusive features to defeat peri-implantitis

Implant Protect™ kit
 Ref. F02120
 IP1, IP2L, IP2R, IP3L, IP3R tips, an autoclavable metal support and a flat wrench.



2 pcs. ~~1258 €~~
629 €
 = 314,50 € each



CAP3 TIP

endosuccess
Canal Access Prep

~~319 €~~
300 €

EndoSuccess™ Canal Access Prep kit

Ref. F88180
CAP1, CAP2, CAP3 tips, an autoclavable metal support and a flat wrench.



endosuccess
Retreatment

~~600 €~~
430 €

EndoSuccess™ Retreatment kit

Ref. F00737
ET18D, ET20, ET25, ET25S, ETBD, ETPR tips, an autoclavable metal support and a flat wrench.



endosuccess
Apical Surgery

~~488 €~~
430 €

EndoSuccess™ Apical Surgery kit

Ref. F00069
AS3D, AS6D, AS9D, ASLD, ASRD tips, an autoclavable metal support and a flat wrench.



endo one

~~586 €~~
430 €

Endo One kit

Ref. F00732
CAP1, CAP2, CAP3, ET25 and ETPR tips, 1 blister of 4 IrriSafe™ 25-21mm, an autoclavable metal support and a flat wrench.



PUREREFLECT

PURE REFLECT®

TECHNOLOGY

an exclusivity of ACTEON PRODONT-HOLLIGER

Inspired by the aerospace industry

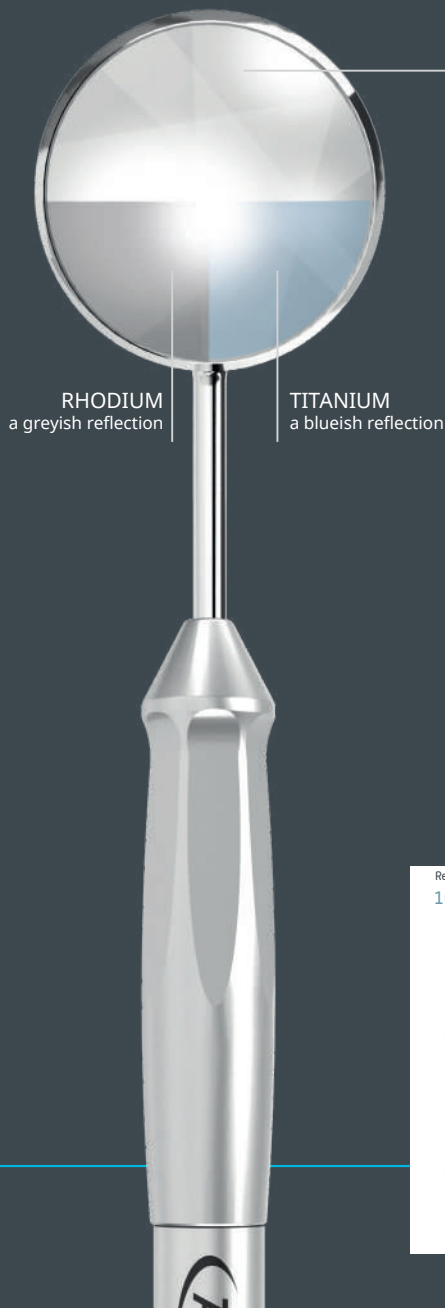
No double image
(front surface)



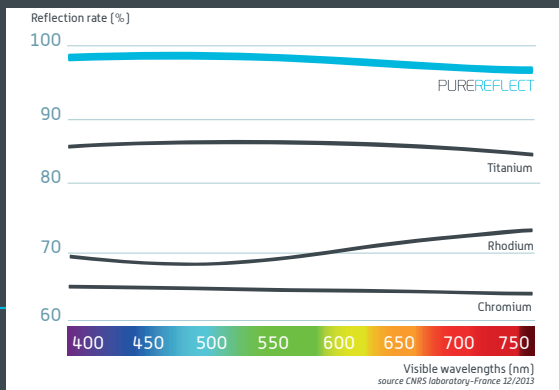
Very luminous



No color and shape distortion
Accurate and sharp image



The authentic color reflection



PUREREFLECT

Pure Reflect® Micro mirrors



Ø3 mm
Ref. MP3303PH

72-€
61 €



Ø5 mm
Ref. MP3305PH

72-€
61 €



7x2 mm
Ref. MP3306RPH

78-€
66 €

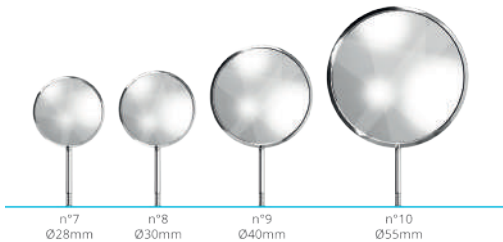


9x3 mm
Ref. MP3310RPH

78-€
66 €



n°0 Ø14mm n°1 Ø16mm n°2 Ø18mm n°3 Ø20mm n°4 Ø22mm n°5 Ø24mm n°6 Ø26mm



n°7 Ø28mm n°8 Ø30mm n°9 Ø40mm n°10 Ø55mm

5 boxes* + 1 handle** 246-€

195 €

**5 BOXES
N°4 OR N°5**

+

**1 HANDLE XL
STYLE****

PURE REFLECT®

N°	Ref.	Qty	Price
0	MP3614PH	12	88 €
1	MP3616PH	12	88 €
2	MP3618PH	12	88 €
3	MP3620PH	12	81 €
4	MP3622PH	12	47 €
5	MP3624PH	12	47 €
6	MP3626PH	12	92 €
7	MP3628PH	1	22 €
8	MP3630PH	1	23 €
9	MP3640PH	1	26 €
10	MP3655PH	1	31 €



XL Style

Ref. 210.00XL
11 €

*Ref. MP3622PH or MP3624PH

**Ref. 210.00XL

Class I Medical devices - CE
Manufacturer: Prodont Holliger (France)

Photographic mirrors rotating holder



Ref. MZP214.
63 €

L. 148mm, Ø15mm to 20mm, 107g, Rot. 70°

- ▶ Anodized aluminium, slightly cone shaped. The articulated upper part permits taking photos in different positions without touching the mirror.
- ▶ Both sides of our double sided photographic mirrors can be used for an extra long life time. Our new handle can hold all types and shapes of our photographic mirrors in an instant.

Cheek retractors



Adult size
Ref. 151.40
5⁴⁰ €



Child size
Ref. 151.41
5⁴⁰ €

Contractors

Made out of aluminium



240x60x1.5mm
Ref. MZP215
22⁷⁰ €



240x60x1.5mm
Ref. MZP216
22⁷⁰ €



120x70x59x1.5mm
Ref. MZP219
22⁷⁰ €



118x85x84x1.5mm
Ref. MZP218
22⁷⁰ €



70x73x1.5mm
Ref. MZP217
22⁷⁰ €

Double sided photographic mirrors

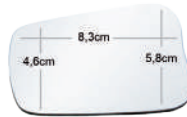
OCCLUSAL



Occlusal Surface Adult

Chromium - Ref. MZP512. 48³⁰ €
 Titanium - Ref. MZP511. 68 €
 Pure Reflect® - Ref. MZP516. 96⁵⁰ €

VESTIBULAR



Occlusal Surface Child

Chromium - Ref. MZP522. 48³⁰ €
 Titanium - Ref. MZP521. 68 €
 Pure Reflect® - Ref. MZP526. 96⁵⁰ €

LINGUAL



Vestibular Surface

Chromium - Ref. MZP53. 48³⁰ €
 Titanium - Ref. MZP531. 68 €
 Pure Reflect® - Ref. MZP536. 96⁵⁰ €



Thin Lingual Surface

Chromium - Ref. MZP542. 48³⁰ €
 Titanium - Ref. MZP541. 68 €
 Pure Reflect® - Ref. MZP546. 96⁵⁰ €



Large Lingual Surface

Chromium - Ref. MZP552. 48³⁰ €
 Titanium - Ref. MZP551. 68 €
 Pure Reflect® - Ref. MZP556. 96⁵⁰ €



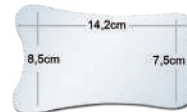
Lateral Shape

Chromium - Ref. MZP562. 48³⁰ €
 Titanium - Ref. MZP561. 68 €
 Pure Reflect® - Ref. MZP566. 96⁵⁰ €



Large Occlusal Surface

Chromium - Ref. MZP572. 48³⁰ €
 Titanium - Ref. MZP571. 68 €
 Pure Reflect® - Ref. MZP576. 96⁵⁰ €



Extra Large Occlusal Surface

Chromium - Ref. MZP582. 48³⁰ €
 Titanium - Ref. MZP581. 68 €
 Pure Reflect® - Ref. MZP586. 96⁵⁰ €



**Mixes all your alginates in
5 seconds without bubbles!**

1170€

950 €

ECOLOGICAL, SIMPLE, FAST AND HYPOALLERGENIC



- ▶ Nice
- ▶ Discreet
- ▶ Small size
(20x24x30cm)
- ▶ Light weight (18kg)
- ▶ Ease of use



Ref. 3055.00

Delivered with 4 bowls, 1 dosing bottle, 1 spatula, 1 mixer

CHROMALG'X™



PRALG'X™



Classe I Medical devices
Manufacturer: Produits Dentaires
Pierre Rolland SAS (France)

NOTES

A series of horizontal dotted lines for writing notes.

General Manager

Marc COLINTel.: +32 (0) 496 529 763
marc.colin@acteongroup.com

Area Sales Manager Imaging Nordic

Robert HANSENTel.: +45 536 31 481
robert.hansen@acteongroup.com

Key Account Manager Nordic

Taina SKOLDINTel.: +46 707 671 442
taina.skoldin@acteongroup.comArea Sales Manager
Nederland / Switzerland**Julie PAEMELAIRE**Tel.: +31 (0) 630 982 228
julie.paemelaire@acteongroup.com

Area Sales Manager Equipment BeLux

Raphaël VAN LOOYTel.: +32 (0) 493 32 07 79
raphael.vanlooy@acteongroup.comArea Sales Manager Imaging
Benelux / Switzerland**Eliel VICENTE**Tel.: +31 (0) 641 371 224
eliel.vicente@acteongroup.comImaging Sales Promoter
and Technical Manager**Kris VLEMINCKX**Tel.: +32 (0) 488 253 771
kris.vleminckx@acteongroup.com**ACTEON
CUSTOMER SERVICE**

ACTEON customer service can be reached at a single number.

0 800 702 014 Free service & call

For any questions about our products, an interactive voice server allows to direct our customers towards the right contact:

- ▶ **IMAGING customer service** > Press 1
- ▶ **EQUIPMENT customer service** > Press 2
- ▶ **PHARMA customer service** > Press 3

EQUIPMENTsav@acteongroup.com
Tel.: +33 (0) 556 349 163**IMAGING**cs@acteongroup.com
Tel.: +33 (0) 186 656 928

Sales Administration

Sabine PARISBelgium / Scandinavia
Tel.: +33 (0) 556 349 332
Fax: +33 (0) 556 349 331
sabine.paris@acteongroup.com**Sandra LASSERROTTE**Luxembourg / Netherlands
Tel.: +33 (0) 556 349 250
Fax: +33 (0) 556 349 331
sandra.lasserrotte@acteongroup.com**Cécile CASTEL**Switzerland
Tel.: +33 (0) 556 349 101
Fax: +33 (0) 556 349 331
cecile.castel@acteongroup.com

Marketing

Lisette VAN DER EIJKTel: +33 (0) 556 349 346
lisette.vandereijk@acteongroup.com



MINIMALLY
INVASIVE
SOLUTIONS

PIEZOTOME

CUBE

Adopt **PIEZOTOME®** extraction to favor bone preservation with **immediate implant placement.**

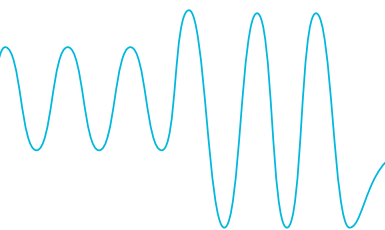
Safer and more predictable extractions

- Atraumatic surgery
- Soft tissue preservation
- Bone preservation for osteointegration and immediate implant placement
- Improved post-operatives outcomes

Proven clinical benefits

- Maintains alveolar bone integrity allowing immediate implant placement*
- Preserves delicate structures: no hypesthesia
- Reduces by 98% analgesic intakes*
- Pain & swelling decreased by over 50%*

*Troedhan A, Kurrek A, Wainwright M. Ultrasonic Piezotome surgery: Is it a benefit for our patients and does it extend surgery time? A retrospective comparative study on the removal of 100 impacted mandibular 3rd molars. *Open Journal of Stomatology*, 2011;1:179-184



Class IIa medical device (GMED) - CE0459
Manufacturer: Satelec® (France)



Ref. D00821 - Autumn Offers 2019 - Scandinavia | Benelux |
Creation date: 07/2019

17 av. Gustave Eiffel | ZI du Phare | 33700 MERIGNAC | FRANCE
Tel + 33 (0) 556 340 607 | Fax + 33 (0) 556 349 292
E-mail: info@acteongroup.com | www.acteongroup.com

